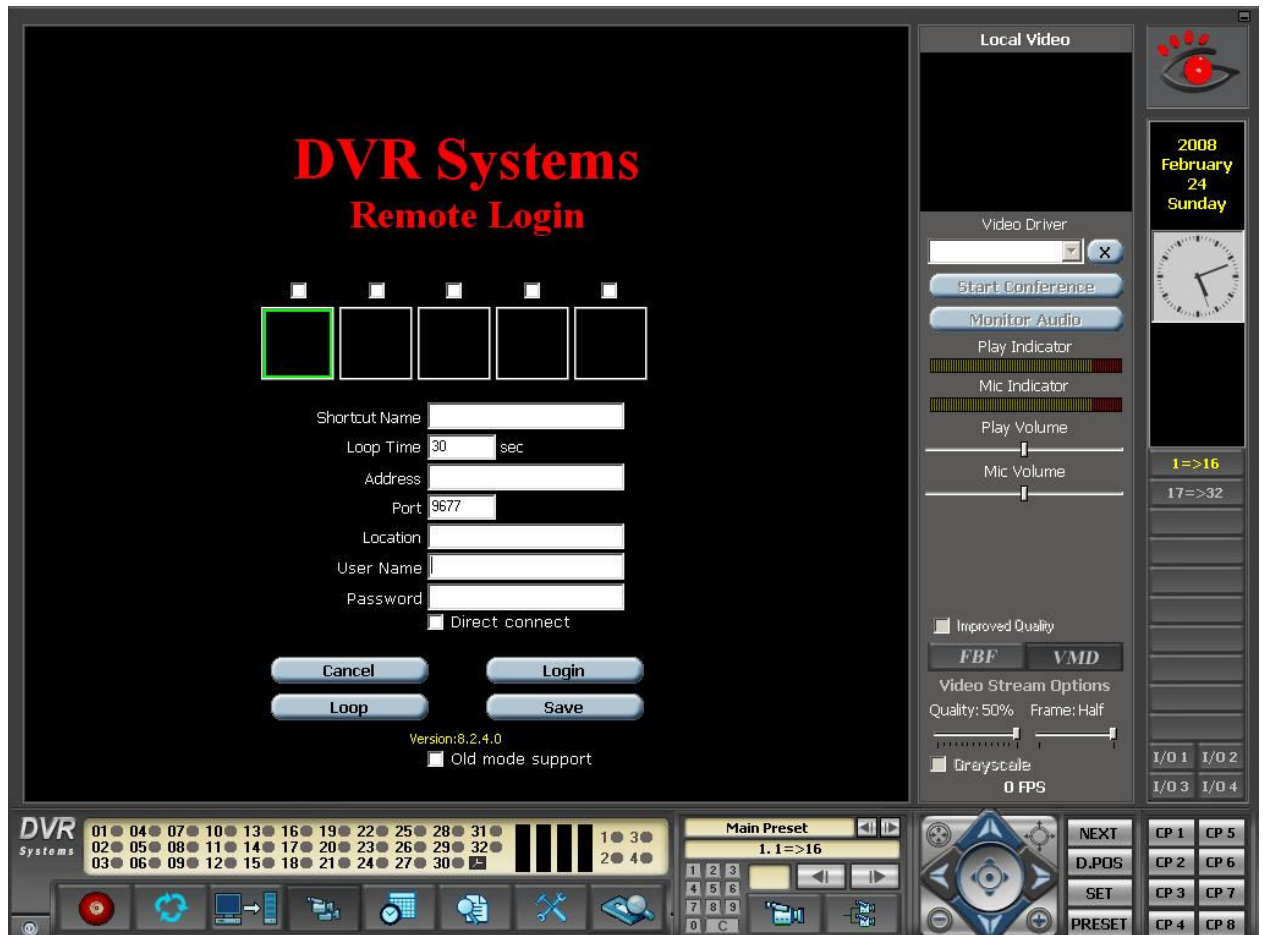


The remote program is similar to the DVTech local program, which are especially designed for the remote user.

In this chapter you will find extensive explanations for those differences. For explanations of functions that are included in the DVTech main program, you will be referred to the appropriate chapters in the DVTech main program manual.



Ports issue - Ports In order to connect from the remote software to the Main software the user must open ports in the router on the Main system computer and router:

Ways to open ports– there are two ways of opening ports:

1. **Full mode** – In this mode the user will be able to control ALL the configurations of the DVTech software. Enter the port number that the remote computer will connect to (The user must open 6 consecutive ports on the firewall, for example – if you choose to open port number 9677, you need to open the ports 9677- 9683).
2. **Minimum mode** – In this mode the user will be able to monitor the cameras and watch the recorded events, but the user will not be able to control and change the configuration. To set this mode enters in the Remote port field the port **80**.

Please make sure to open the ports before connecting from the remote to the Main system.

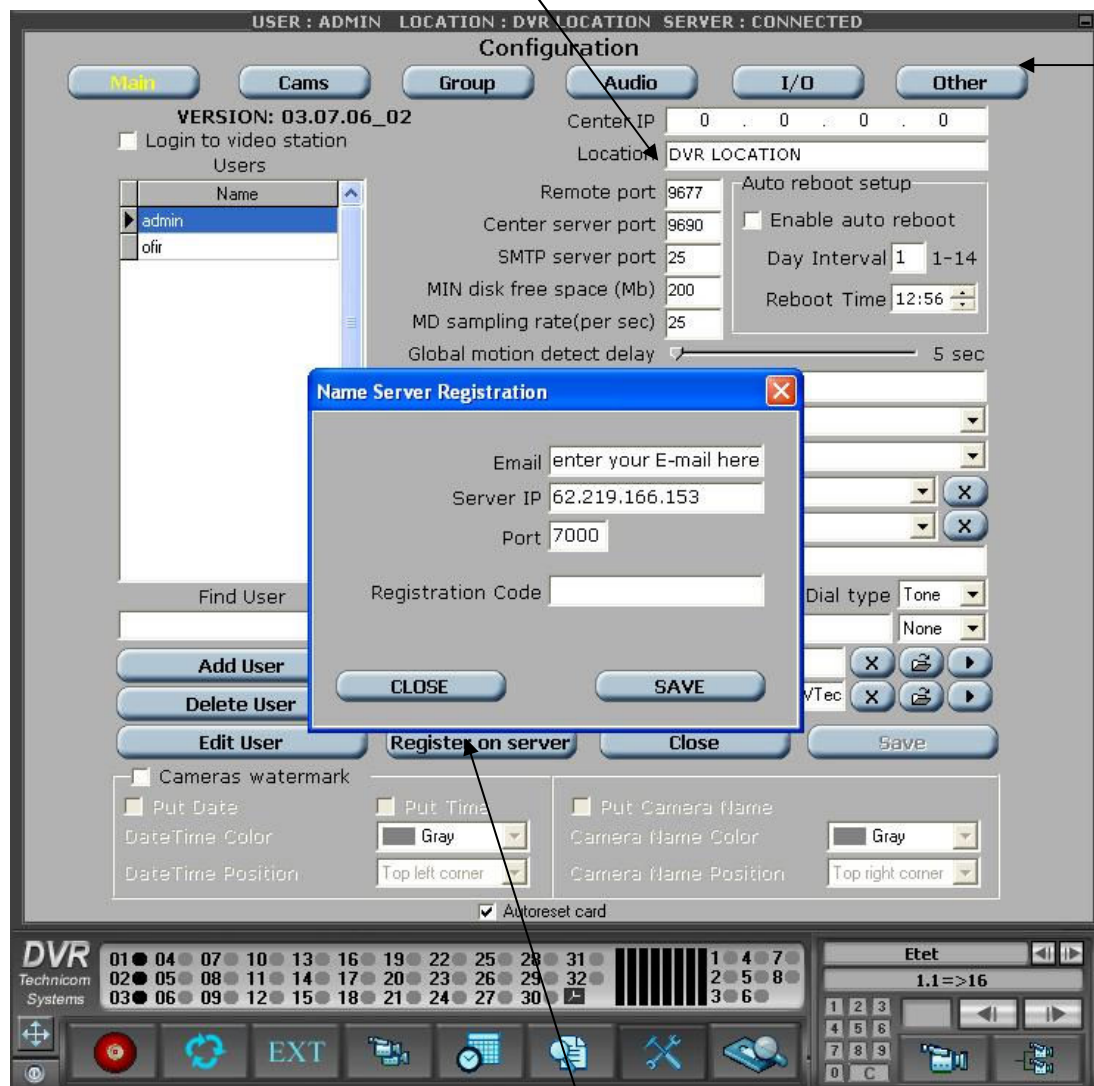
Connecting to the main program from the remote program:

DVTech has 2 ways to connect from the remote:

DNS Mode (Main system configuration):

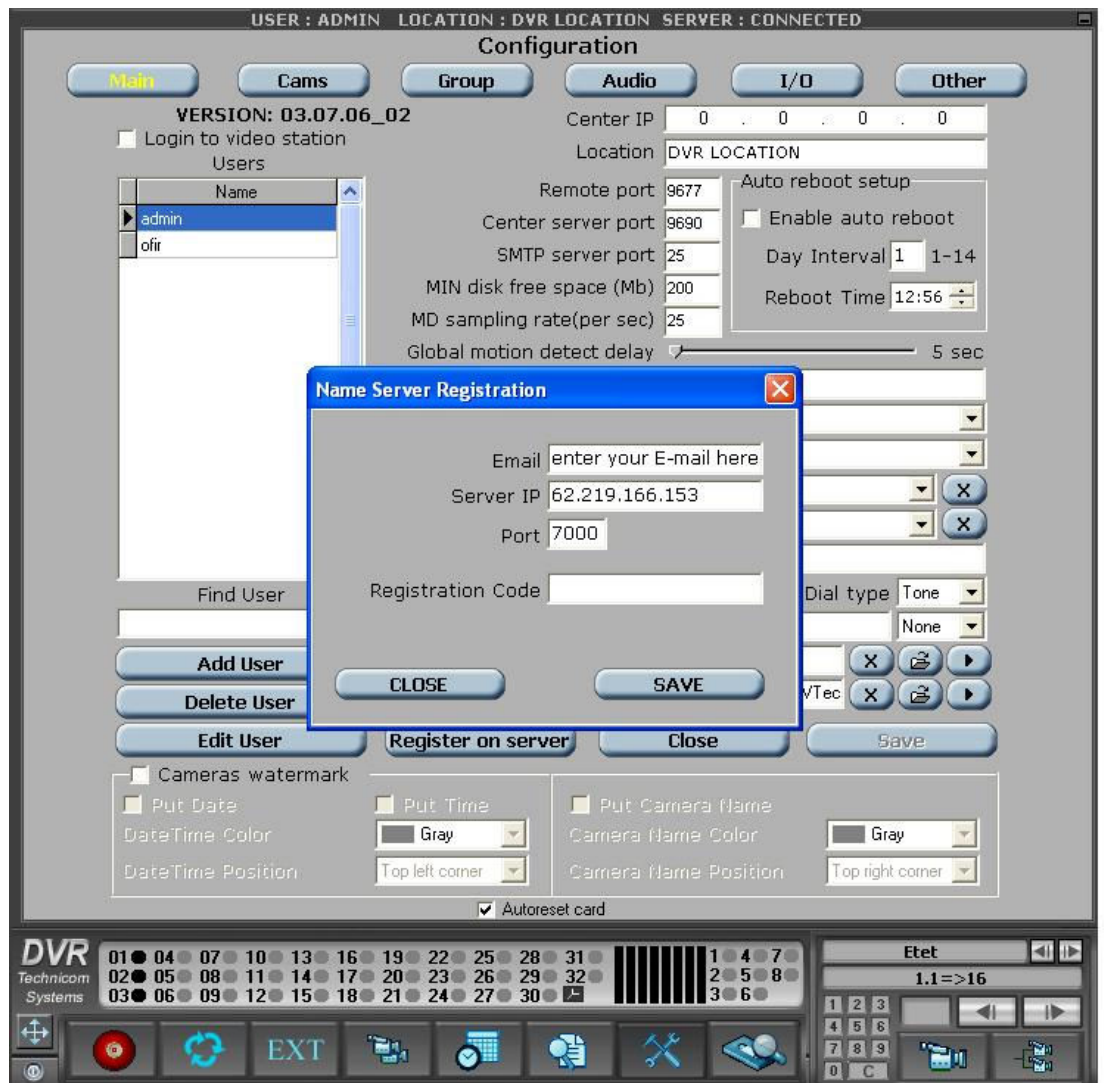
Registration to DNS server in the Main software


1. Enter the main configuration in the DVTech main system.
2. Enter the desired name in the Location field and press "SAVE" (Please note that the name is case-sensitive and has a minimum of 7 characters).



3. After entering the location name, click on the **Register on server** button to open the DNS configuration.
4. When the DNS configuration dialog box is opened fill in the following:
 - a. Email – Enter the E-mail address to which the Registration code will be sent.

- b. Server IP – The IP address must be : **www.dvtechone.com**
 - c. Port – The port must be: **6060** or **9999**
 - d. Registration Code: The **first** time the registration code must be left blank.
5. After entering all the details (except for the registration code), click on the save button.
 6. Check the top label of the main system software to ensure that the server is connected.




7. Check your E-mail for a registration code from "**DVTech robot**".
8. Check your E-mail (for the address entered in the E-mail field) for an E-mail with a sender name of "**DVTech robot**", in the E-mail there will be a registration code.
9. Highlight and copy the code to Windows clipboard and open the Name Server Registration window by clicking  .
10. Paste or manually enter the code in the "Registration Code" space, and click the "Save" button.

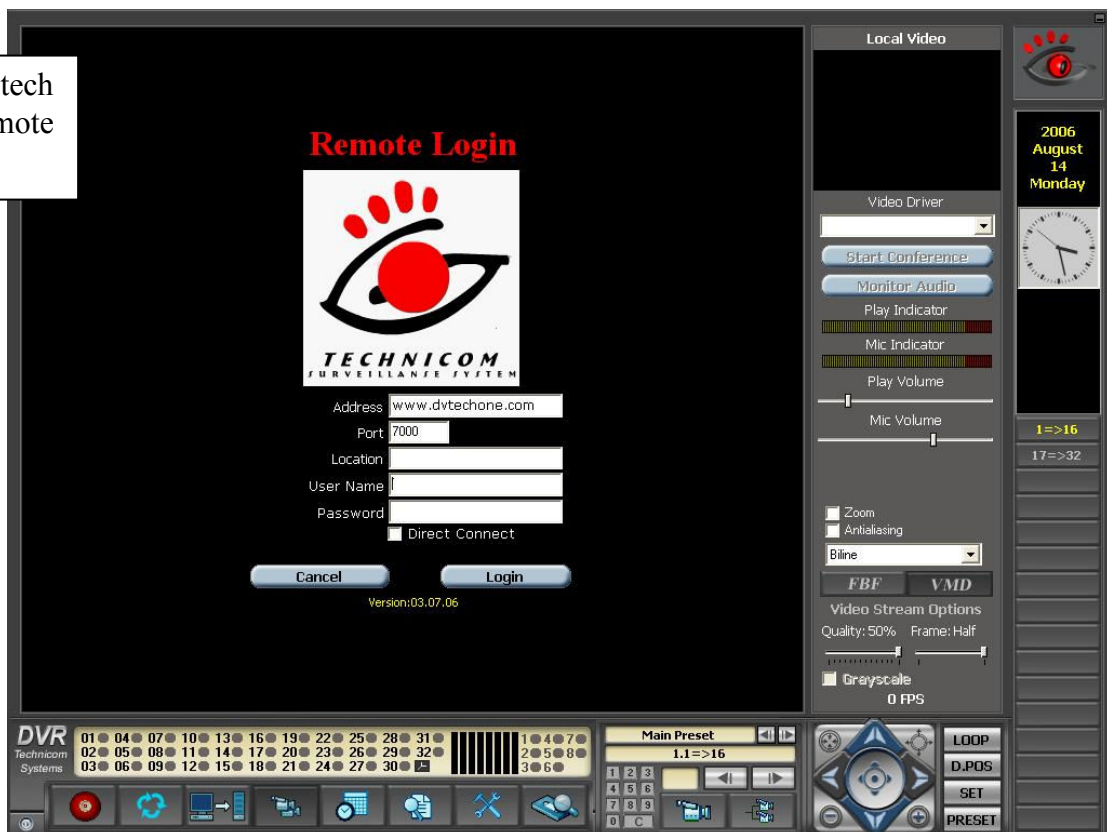
11. Check the top label for yellow label indication for connection and registration to the server.

Connecting to the main program from the remote program:


12.3.1 DNS mode:

1. Open the DVTech Remote software.
2. On the Login screen enter the following:
 - A. Address – Enter this address: www.dvtechone.com
 - B. Port – Enter this port : **6060/9999** (ask the installer to which the DVR system is connected)
 - C. Location – Enter the predefined location name same as entered for main system
- D. Enter your username & password and click on  to connect.

DVtech
Remote



Connecting with the Remote by direct connect:

1. Open the DVTech Remote software.
2. On the Login screen enter the following:
 - E. Address – Enter your IP address
 - F. Port – Enter your port number same as remote port on the main software, see chapter 4.1 Main configuration.
 - G. Enter your user name & password
 - H. Check the box for "Direct connect" Direct Connect
- I. Click on  to connect.

DVtech
Remote

